



# Truckee River Flood Management Authority

---

**FY2012 Proposed Budget**

**Naomi Duerr, Director**

**April 8, 2011**



# Budget Concepts

---

- Focus on organizational start up of JPA
- Establish and implement rates and fees
- Limited number of new TRAction projects
- Prepare for bond issue and future construction



# FY 12 Goals: JPA Start Up

---

- Housekeeping
  - Insurance
  - Financial system
  - Services provided by Washoe County
  - Funds established & opened
  - Financial transactions between the County & JPA
  
- Rates and Fees established & implemented
  
- Initiate Bond issue after fees



# FY 12 Goals: See Planning through to Congressional Action

---

- AFB – Alternatives Formulation Briefing
- Assist with EIS
- Civil Works Review Board
- Congressional Authorization - WRDA 2012
- Congressional Appropriation
- Project Partnership Agreement and match process



# FY 12 Goals: TRAction Projects

---

## □ Existing

- Virginia Street Bridge
- Hidden Valley Home Elevation Program
- McCarran Reclaimed Water Stubout

## □ New

- Living River Parkway Design (match for Corps)
- Terracing Design for Southeast Connector



# FY 12 Goals:

## Land Acquisition and Relocation

---

- 35/65 Edison Way
- UNR
- Airport Authority
- TMWRF for SE Connector Crossing
- Land Exchange at Painted Rock
  
- Relocation (already committed and new)



# FY 12 Goals: Operations

---

- Complete Regional Hydrologic Model
- Develop Project Design Standards
- Edison Re-vegetation Pilot Project
- Restart Use of Tributary Forecasting Software
- Operate Flood Warning System
- Operate and Maintain Built Projects



# FY 12 Goals: Staff

---

- Reclassify Natural Resource Planner Coordinator to Natural Resource Manager





# FY 12: Sources

---

Infrastructure Tax	\$6,392,000
Interest	59,000
Rental	42,000
Other	<u>9,000</u>
Total Revenues and Incomes	6,502,000
Beginning Fund Balance	<u>21,092,000</u>
<b>Total Sources</b>	<b>\$27,594,000</b>



# FY 12 Uses

---

## **Operating**

Salaries and Benefits	\$1,741,000
-----------------------	-------------

Services and Supplies	<u>3,725,000</u>
-----------------------	------------------

Total Operating	5,466,000
-----------------	-----------

<b>Debt Service</b>	2,733,000
---------------------	-----------

<b>TRAction Projects</b> (Existing and New)	8,649,000
---	-----------

<b>Land</b> (including Deposit)	<u>7,593,00</u>
---------------------------------	-----------------

<b>Total Uses</b>	<b>\$24,441,000</b>
-------------------	---------------------



# FY 12 Balance

---

**Sources**            **\$27,594,000**

**Uses**                **\$24,441,000**

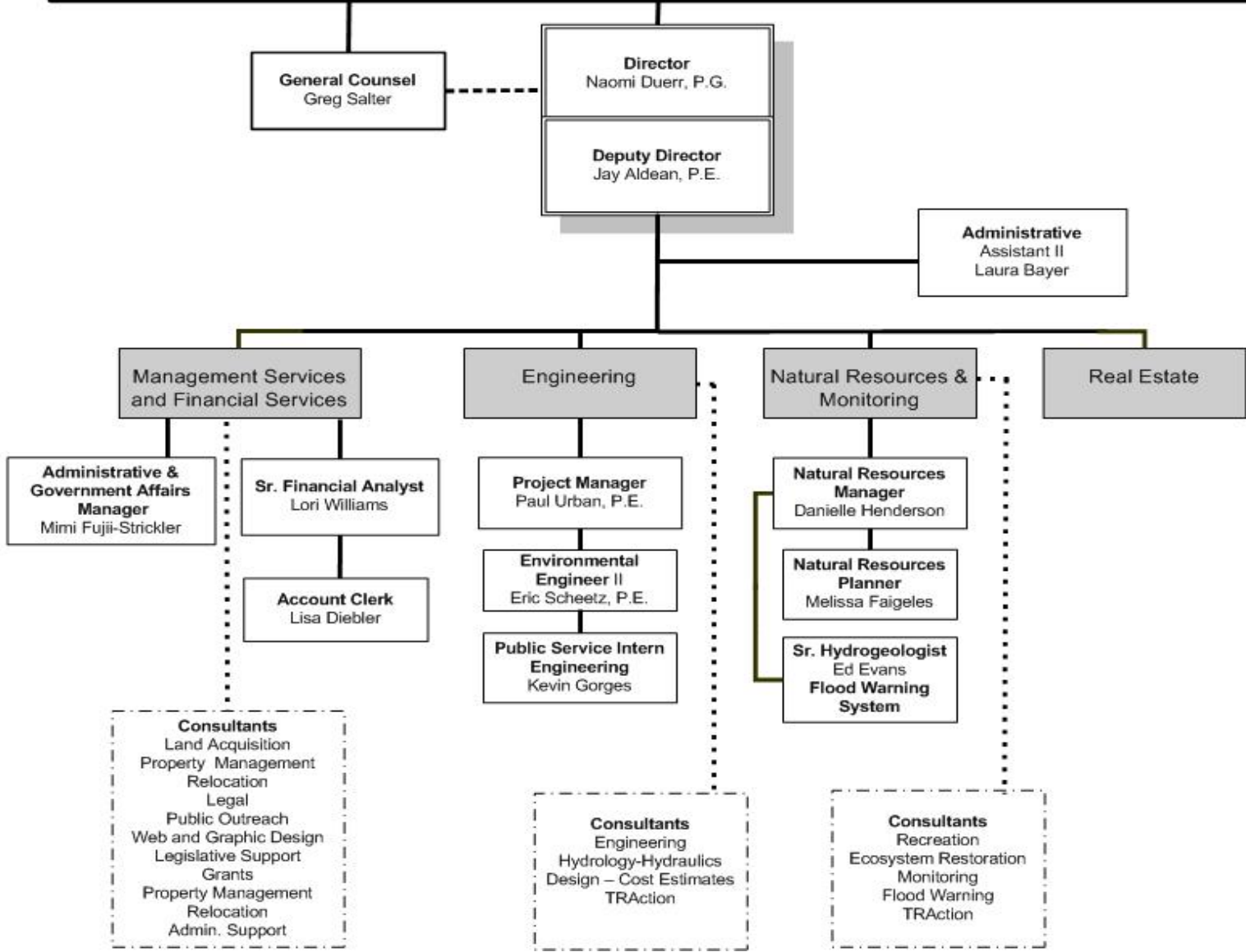
**Fund Balance  
for Reserves**

**\$ 3,153,000**



# TRUCKEE RIVER FLOOD MANAGEMENT AUTHORITY BOARD OF DIRECTORS

*March 2011*



# Questions?

