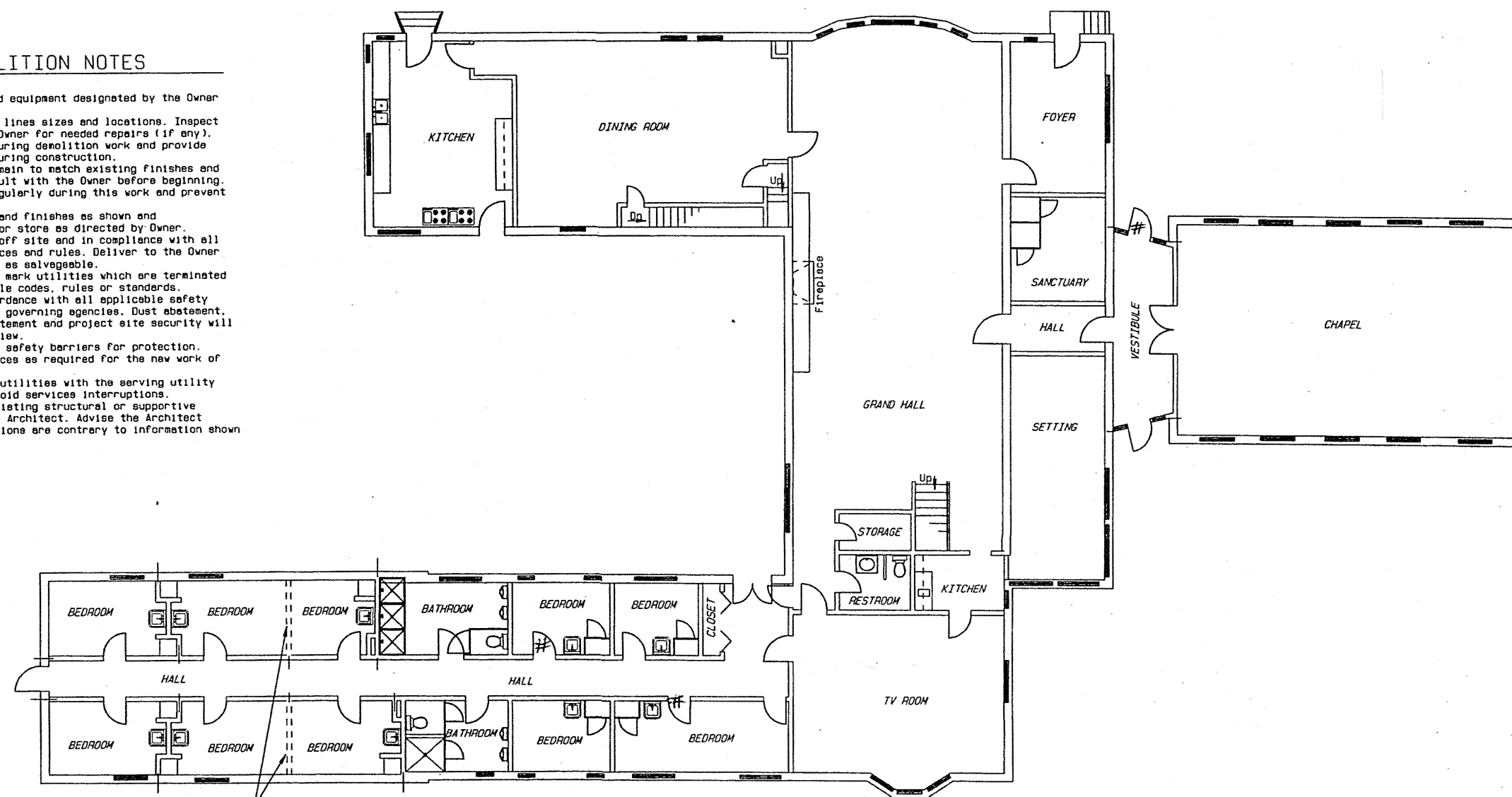


**GENERAL DEMOLITION NOTES**

1. Save and store all materials and equipment designated by the Owner for re-use or protection.
2. Verify existing water and sewer lines sizes and locations. Inspect for condition and consult with Owner for needed repairs (if any).
3. Protect building from weather during demolition work and provide secure closure and protection during construction.
4. Patch and repair surfaces to remain to match existing finishes and colors wherever possible - consult with the Owner before beginning.
5. Remove debris, dust and dirt regularly during this work and prevent accumulation of trash on site.
6. Remove existing roof, fixtures and finishes as shown and dispose of all waste materials or stone as directed by Owner.
7. Dispose of all waste materials off site and in compliance with all applicable laws, codes, ordinances and rules. Deliver to the Owner any materials designated by him as salvageable.
8. Properly cut, cap, identify and mark utilities which are terminated in accordance with all applicable codes, rules or standards.
9. Perform all work in strict accordance with all applicable safety orders, rules or regulations by governing agencies. Dust abatement, noise controls, fire hazard abatement and project site security will be subject to public agency review.
10. Provide temporary security and safety barriers for protection.
11. Patch and repair exposed surfaces as required for the new work of this remodel.
12. Coordinate the changes in the utilities with the serving utility and the Owner to minimize or avoid services interruptions.
13. Do not remove or damage any existing structural or supportive elements without consulting the Architect. Advise the Architect immediately if concealed conditions are contrary to information shown in the drawings.

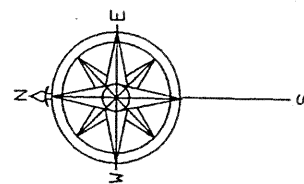


Remove (e) walls and patch and repair remaining surfaces to match (e) finish.

**DEMO/ NEW FLOOR PLAN LOWER LEVEL**

NOTE: - - - - Broken lines indicate walls or wall sections to be removed.

Scale: 1/8"=1'-0"



3" 1 1/2" 1" 1/2" 1/4"

Revision

**Z E P H Y R**  
an architecture and planning firm

1055 Riverside Drive  
Reno, Nevada 89503  
(702) 329-4850 (fax 329-2959)

SAGE WIND - DEMO/NEW FLOOR PLAN LOWER LEVEL  
101 S. McCarran  
Reno, Nevada

Date 01/20/98  
Drawn agn  
Scale: 1/8" = 1'  
File sv-el  
Dwg.  
**A-1**